

CERTIFICATE OF LOCATION OF GOVERNMENT CORNER

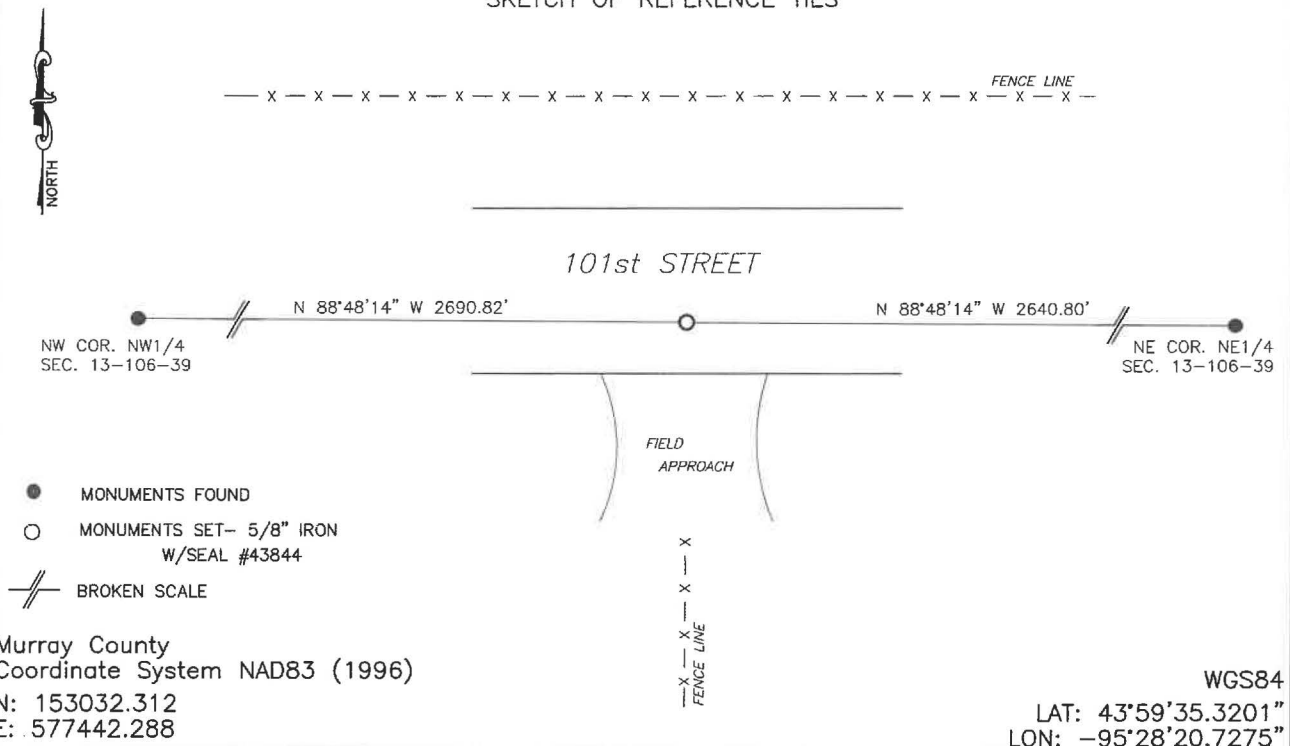
NORTH QUARTER Corner of Section 13, Township 106, Range 39, 5TH P.M.

STATE OF MINNESOTA, County of MURRAY

At the corner location shown on the sketch:

- ☐ On _____ found a _____
DATE
- ☐ left monument as found, ☐ lowered monument, ☐ removed monument (explain)
- ☒ On 1/29/2025 placed a 5/8" IRON WITH SEAL #43844
DATE

SKETCH OF REFERENCE TIES



Statement of evidence relative to this corner location is on back of page.

I hereby certify that this document and the data contained herein was prepared by me or under my direct supervision.

[Signature] 3/12/2025
Daniel L. Bueltel DATE
License No. 43844

MAR 13 2025

[Signature]

MURRAY COUNTY RECORDER

Statement of Evidence

NORTH QUARTER CORNER SECTION 13, T106N, R39W OF THE 5TH P.M.

In September 1858, W.J. Neely surveyed the east township line.

In July of 1861, J.W. Myers surveyed the north, south, and west township lines.

In August of 1861, Wellman & Smoot subdivided the township.

In November of 1914, J.W. Woolstencroft notes a Government Corner at the corner location.

On June 28, 2024 Bueltel-Moseng Land Surveying searched the area and found nothing. We returned on July 23, 2024 and dug a 6.5'x10'x5' deep in the centerline of the road and inline with established fence line to the south. We found nothing and nothing was recorded. Returned on January 29, 2025 and set a $\frac{5}{8}$ " iron with seal #43844 on line between the section corners and single proportionate with the survey from 1914. Corner fell in line with fence line to the south.